



Cambium Networks™

Force 110 Assembly Guide





Front view showing



Step 1 - Align Center feed tube to the dish. Cables go through the dish. The Center feed is used as an alignment tool.



NOTE: DO NOT PINCH OR BIND THE CABLES.



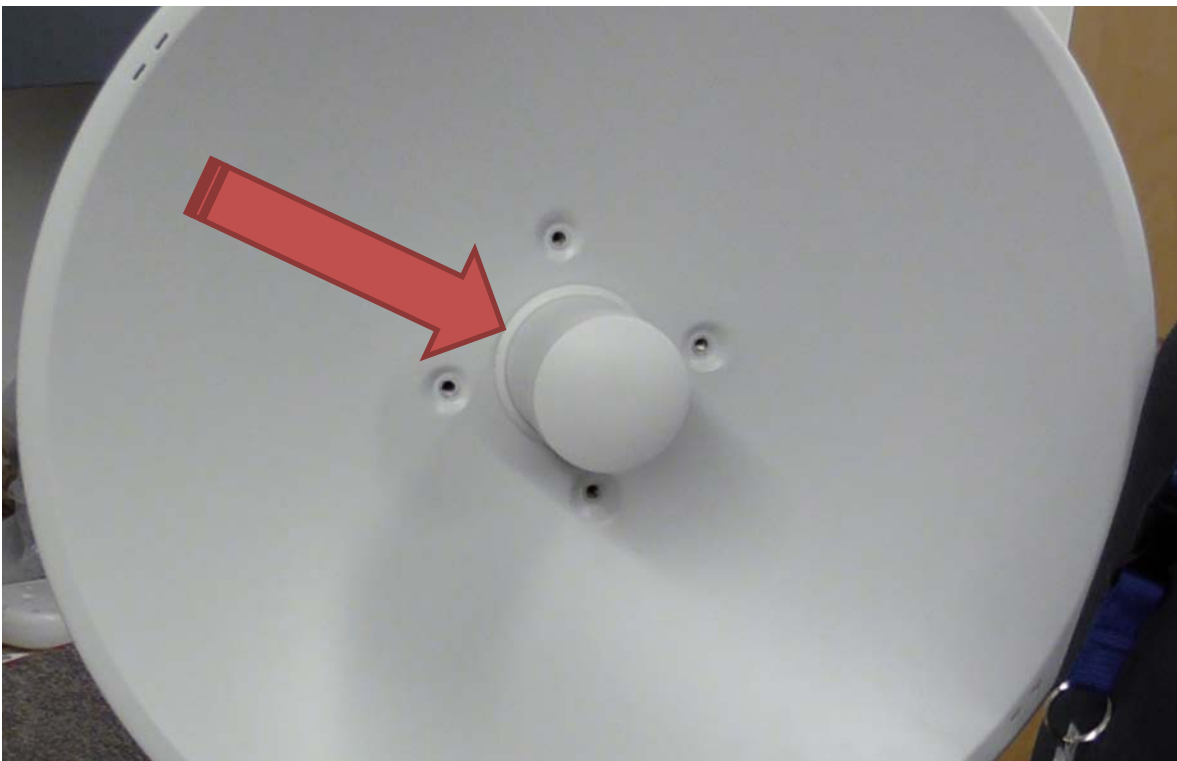
Step 2 – First Align keyway.



Step 3 - Press Center feed to seat on the surface of the Dish.



NOTE: DO NOT PINCH OR BIND THE CABLES.



NOTE: Make sure that the Center Feed lip is flush with the Dish.



Rear view showing



Step 4 - Flip dish and Center feed over. The Center feed assembly to the dish will have press fit and not a slip fit.



Figure 1 - Mounting to the Right side of a pole.



Figure 2 - Mounting to the Left side of a pole.

Step 5



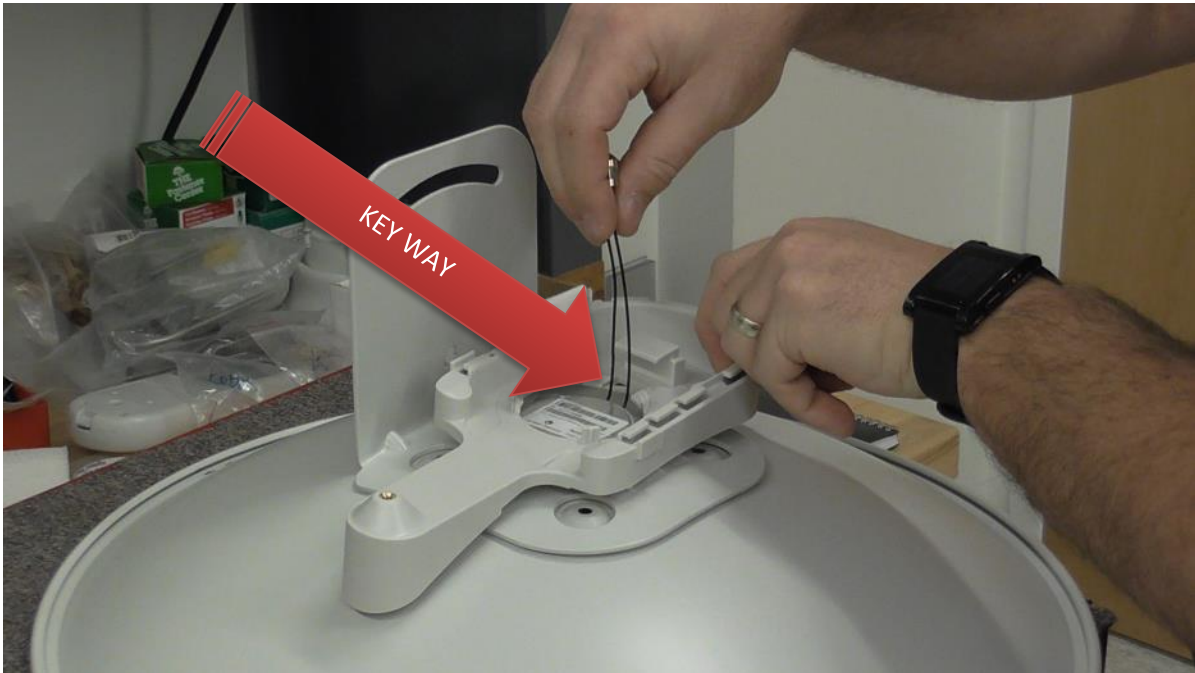
NOTE: DETERMINE THE PROPER POLE ORIENTATION BEFORE FULL ASSEMBLY.



NOTE: DO NOT PINCH OR BIND THE CABLES.



Rear view showing



Step 6 Assembly Bottom Housing to dish. Align key way of the Center feed to the Bottom housing. Hold all pieces when flipping over to install screw assembly.



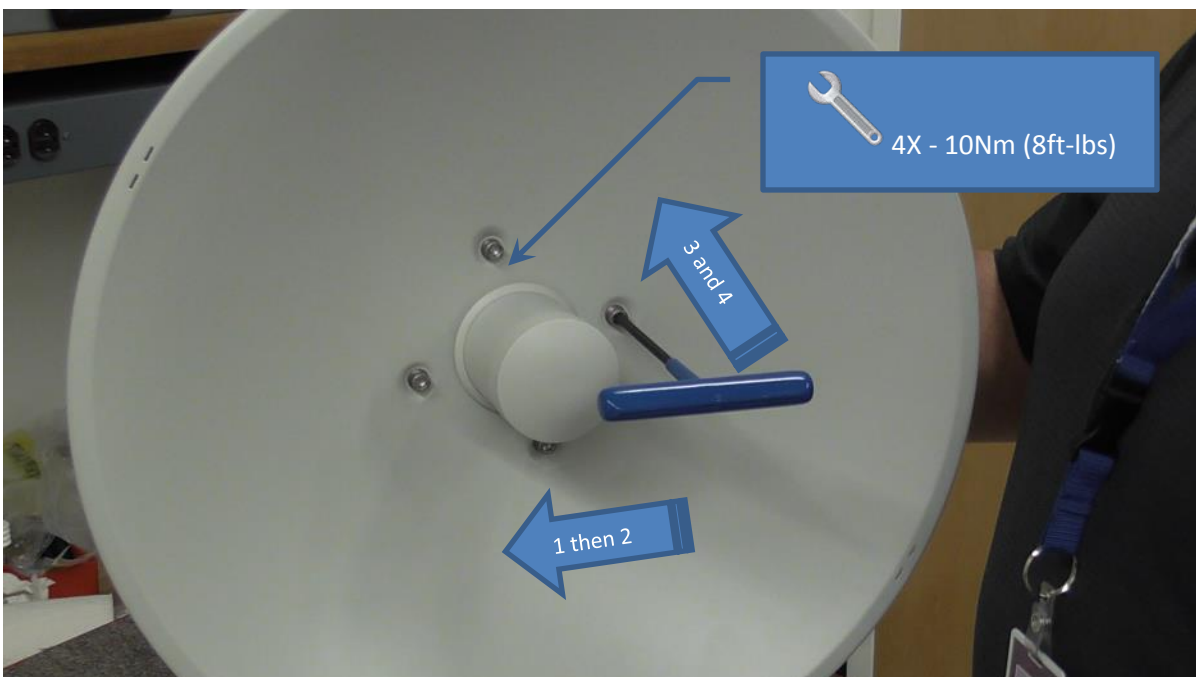
Step 7 – 4X: Screw Assembly order: M6 SHCS / Split Washer / Flat Washer (round surface facing down as shown).



Front view showing



Step 8 – 4X: Insert screw / spring washer and flat washer to assemble. Finger tight the screws.



Step 9 Tighten in a crisscross pattern. Torque to 10.8Nm (8.0 ft lbf)



Step 10 – Push on the Centerfeed firmly until you hear the 4 lock clips engaging (a clipping sound).

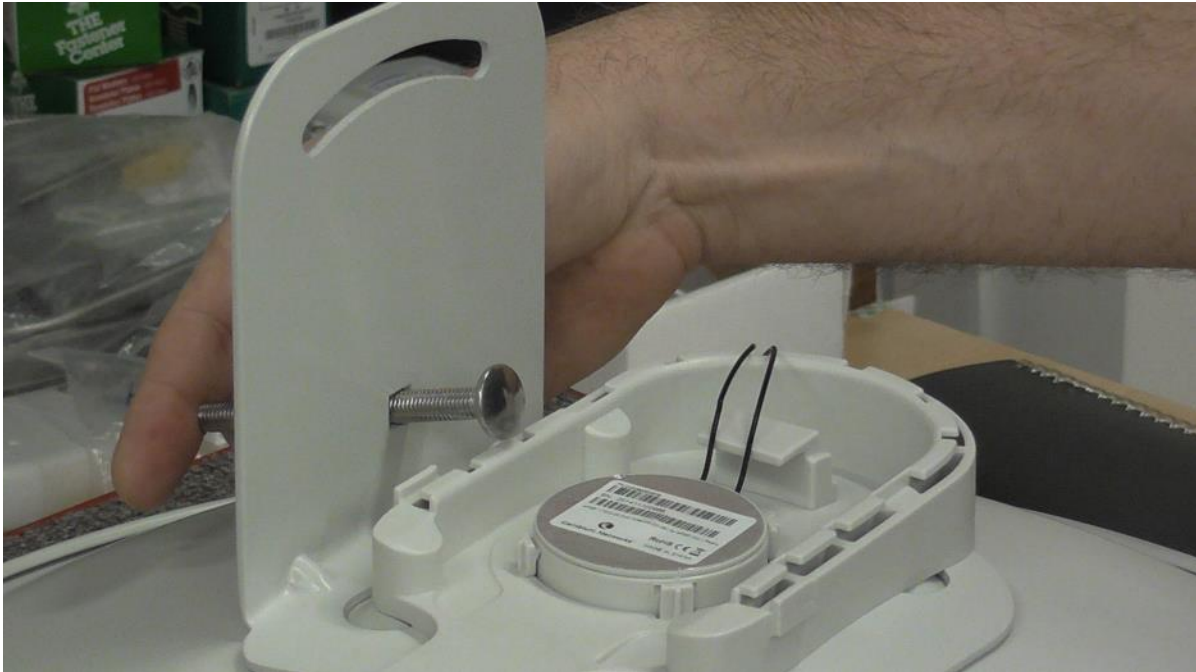


Step 11 –If the snaps are not fully engaged. Use a flat head screwdriver to engage the snaps.



Cambium Networks™

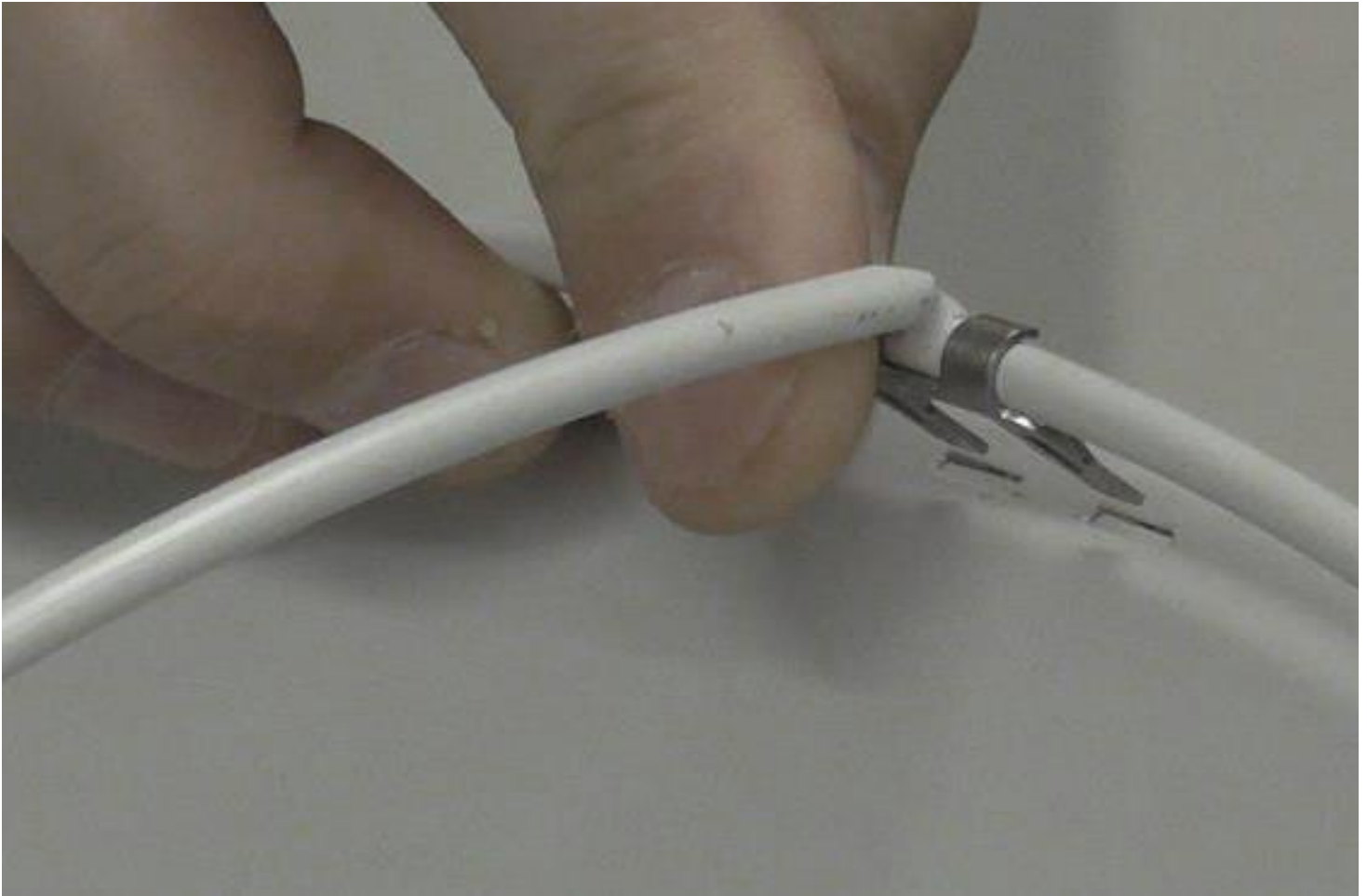




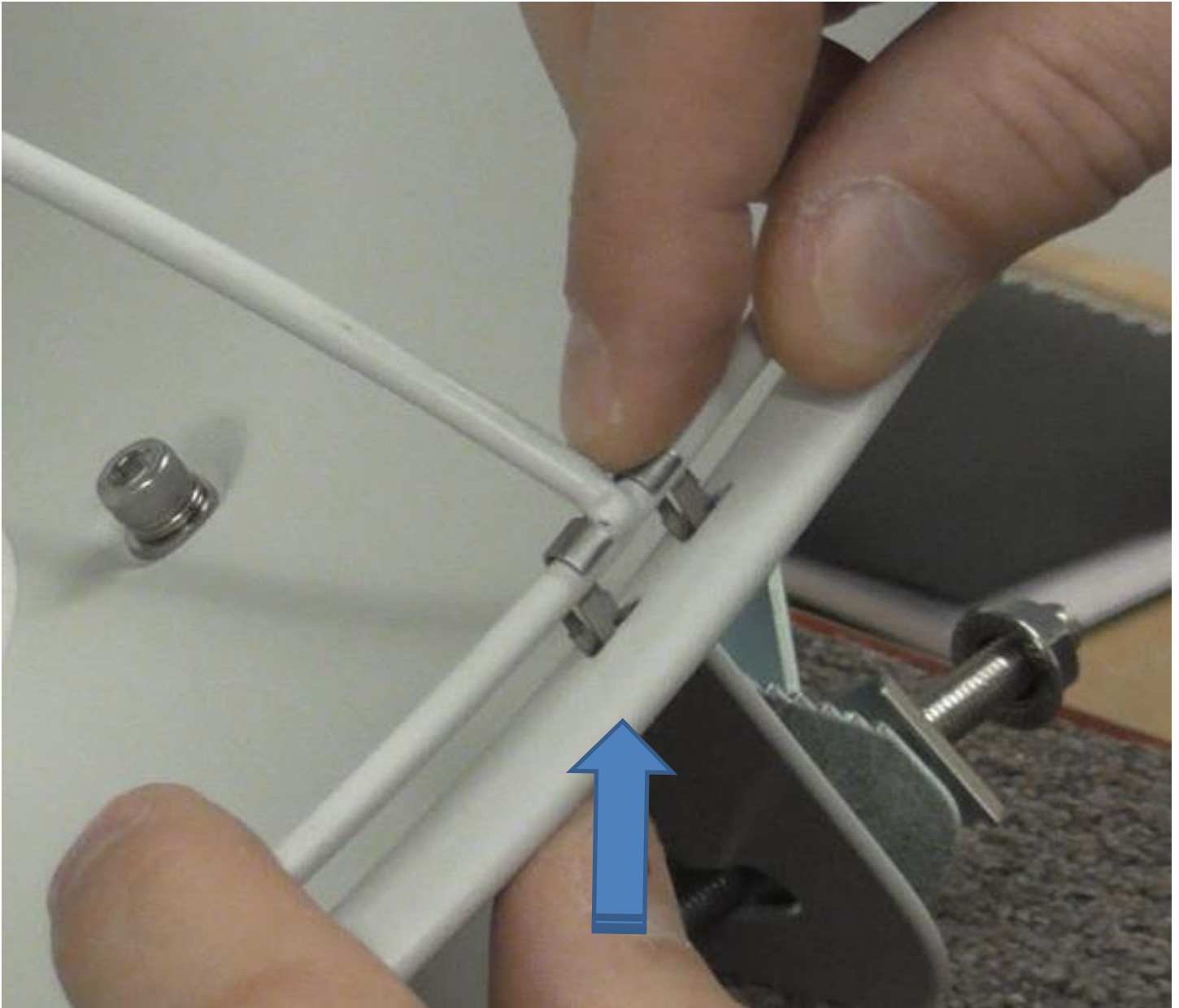
Step 12 – Assemble the Pole mounting bracket. Flat side of the Carriage bolt is to be installed from the inside of the Bracket (as shown). Insert Carriage bolts - one through square opening and the other through the curved opening.



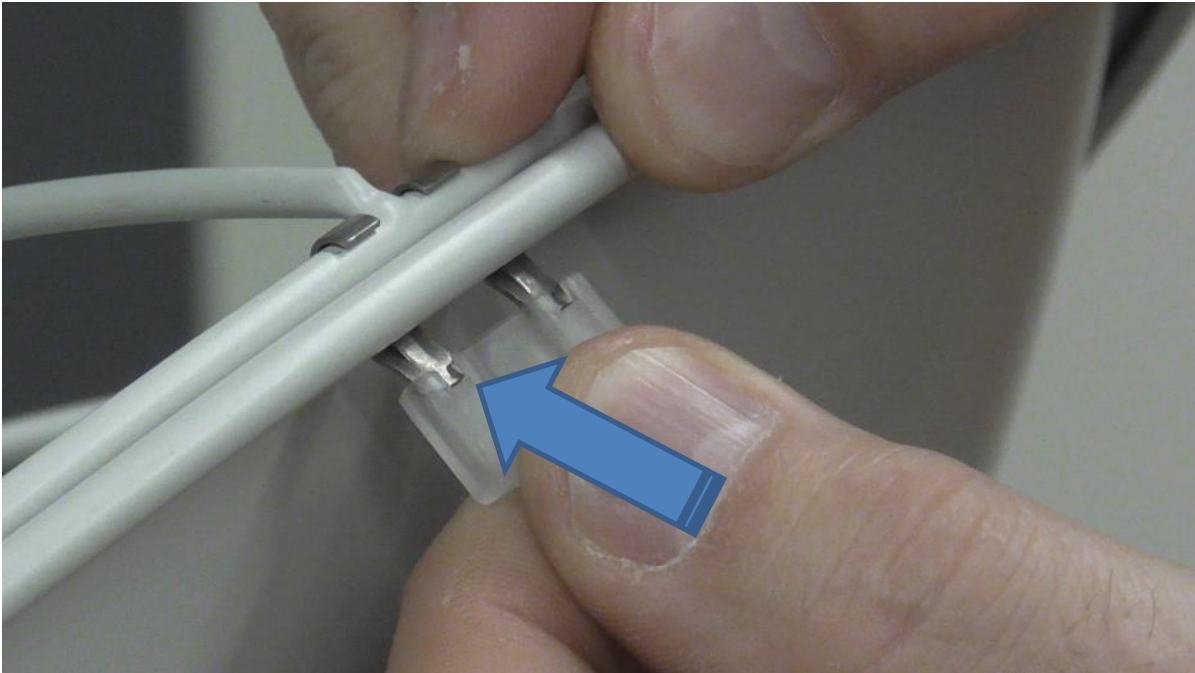
**Step 13 – A) Slide on Bracket Pole Mount through Carriage bolts.
B) Slide on Bracket Pole Mount Clamp through Carriage bolts (keep open slot up).
C) Slide on Bracket Pole Mount Retainer through Carriage bolts to cover open slot of the Bracket Pole Mount Clamp .
D) Screw on Flange Hex nuts to Carriage bolts.**



Step 14 - Secondary Clip insertion. Do this for all four corners. Ensure that the Clips are facing outwards.



Press firmly on the Retainer Clips when assembling to the dish..



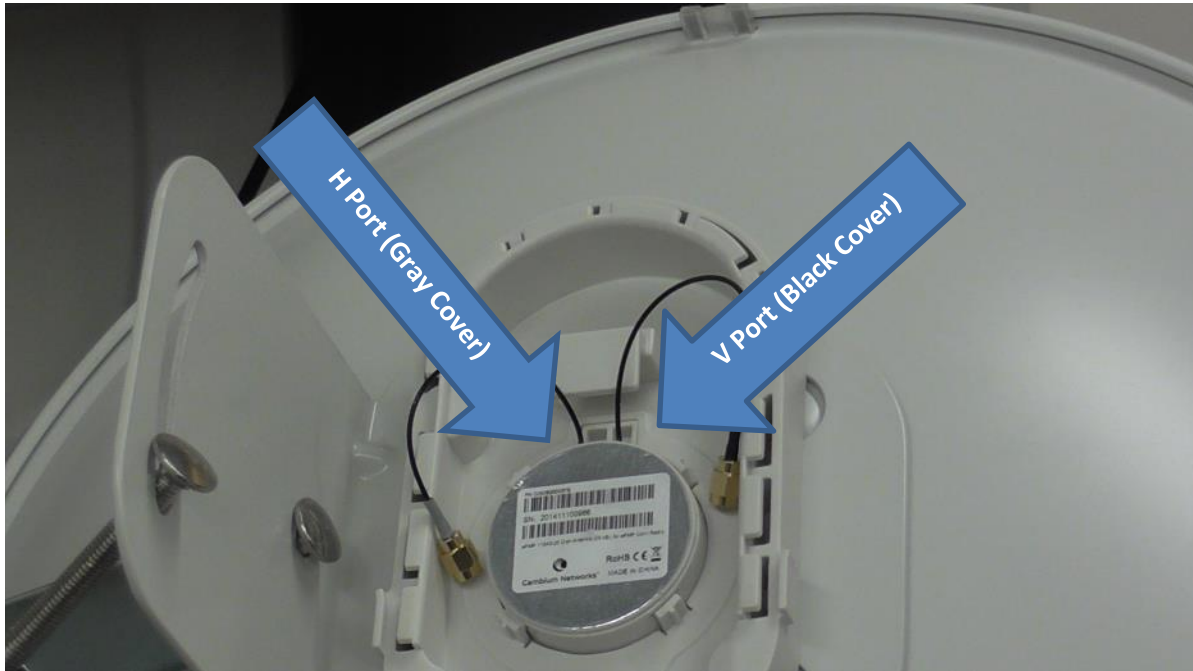
Step 15 - Inserting Secondary Clip Cover. Keep notch facing outward. Do this for all four clips.



Step 16 – With the radio pointing up, attach the Cambium Networks Logo Medallion to the Secondary antenna.



Attaching the CSM radio to the Force 110



Step 17 – Gray shielding is H / Black shielding is V Keep cables to the side of the upper radio mount.



NOTE: DO NOT PINCH OR BIND THE CABLES.



Step 18 - Tighten SMA CONNECTORS.



1Nm (8in-lbs)



Step 19 – Keep cable to the left and right of the center support mount. Slide on the ePMP CSM radio.



NOTE: DO NOT PINCH OR BIND THE CABLES.

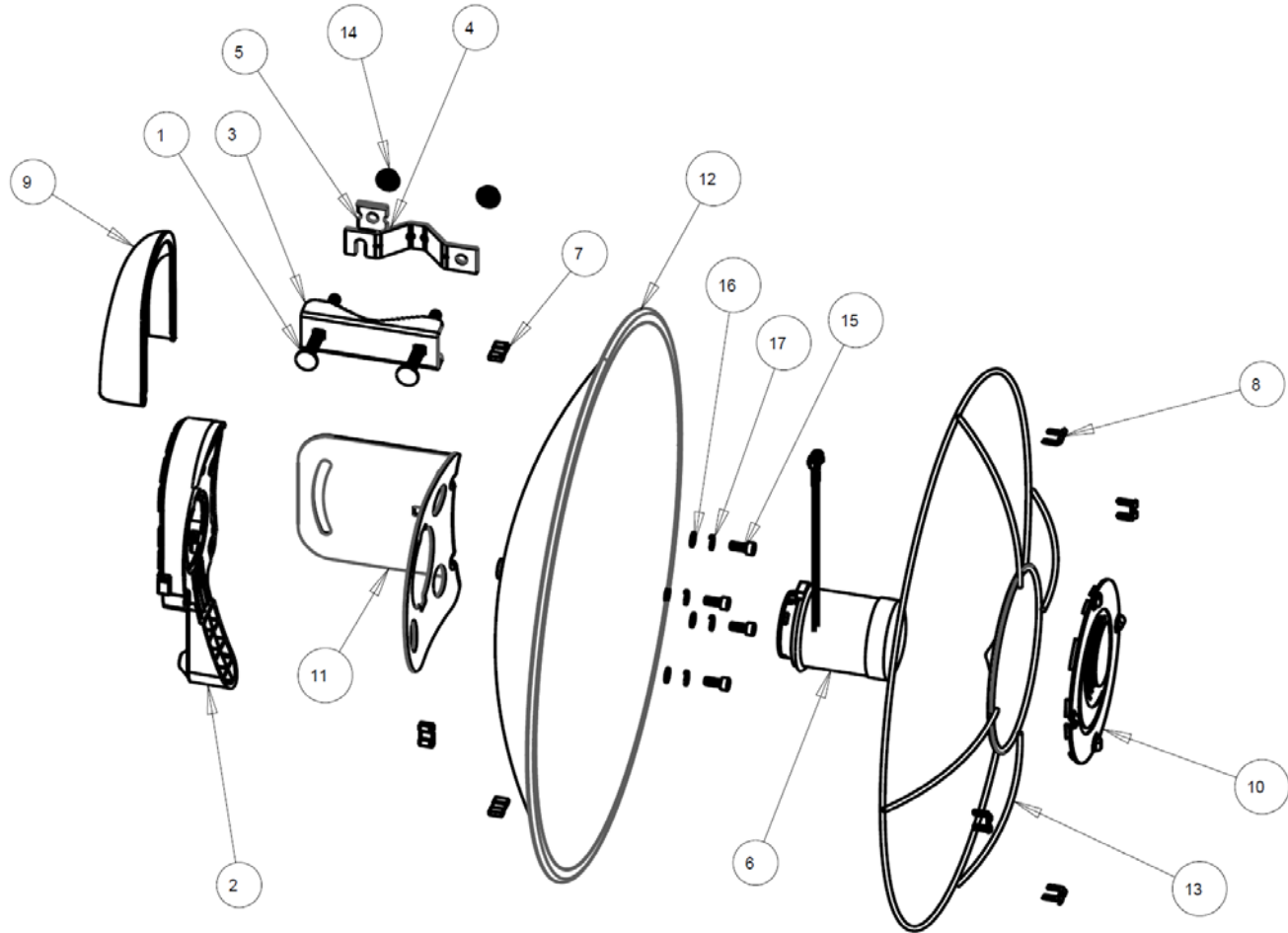


Step 20 - Tighten the M5 lock screw to a TORQUE of 6.0 Nm (4.43 ft lbf)



Step 21 – Slide Cover down until you hear a click.

ASSEMBLY IS NOW COMPLETE



ITEM NO	QTY	DESCRIPTION
1	2	BOLT-RHSN M8X90MM 316SS
2	1	BOTTOM-HOUSING
3	1	BRACKET-POLE MOUNT
4	1	BRACKET, POLE MOUNT, CLAMP
5	1	BRACKET, POLE MOUNT, RETAINER
6	1	CENTER FEED 81mm
7	4	CLIP, RETAINER, COVER
8	4	CLIP, RETAINER, SUBREFLECTOR
9	1	COVER-BOTTOM-HOUSING
10	1	COVER, SUB-REFLECTOR
11	1	DISH-BRACKET-MOUNT
12	1	DISH, 450MM
13	1	FRAME, SUB-REFLECTOR
14	2	NUT-FLANGE-HEX-LOCKNUT-M8
15	4	SCREW, M6x1x14mm, 316SS
16	4	WASHER, M6 x 6.5mm ID x1.5mm
17	4	WASHER, SPLIT LOCK, M6 SCREW, SS