

172.31.1.2/#cambui\_accordion\_44

© 2016 Cambium Networks, All Rights Reserved | Version 2.6.2 | Support | Community Forum

5:06 PM 02/09/16

**System Summary**

| Device Name                 |               |
|-----------------------------|---------------|
| SSID                        |               |
| Operating Frequency         | 5510 MHz      |
| Operating Channel Bandwidth | 10 MHz        |
| Transmitter Output Power    | 20 dBm        |
| Antenna Gain                | 15 dBi        |
| Country                     | Other         |
| Access Point Mode           | TDD           |
| Downlink/Uplink Frame Ratio | 50/50         |
| Wireless Security           | Open          |
| cnMaestro Remote Management | Enabled       |
| cnMaestro Connection Status | Resolving URL |
| cnMaestro Account ID        | --            |

| Wireless MAC Address          |                           |
|-------------------------------|---------------------------|
| Ethernet MAC Address          |                           |
| IP Address                    |                           |
| Date and Time                 | 01 Sep 2015, 00:30:56 GMT |
| System Uptime                 | 30 minutes, 50 seconds    |
| System Description            | --                        |
| Sync Source Status            | Internal                  |
| Device Coordinates            | --                        |
| DFS Status                    | Not Available             |
| Ethernet Status               | 100 Mbps / Full           |
| Wireless Status               | Up                        |
| Registered Subscriber Modules | 0                         |

Click on quick start

172.31.1.2/#cambui\_accordion\_44

© 2016 Cambium Networks, All Rights Reserved | Version 2.6.2 | Support | Community Forum

5:07 PM 02/09/16

**Quick Start > Quick Start**

General

**Radio Mode**

- ☐ Access Point
- ☐ Subscriber Module
- ☒ Spectrum Analyzer

**Access Point Mode**

- ☐ TDD
- ☐ Standard WiFi
- ☐ ePTP Master
- ☐ TDD PTP

**Max Range** 21 kilometers | min: 1 | max: 64

**Automatic Channel Selection**

- ☐ Disabled
- ☐ Enabled

**Frequency Carrier** 5510 MHz

**SSID**

**Device Name**

**Downlink/Uplink Ratio**

- ☐ 75/25
- ☒ 50/50
- ☐ 30/70
- ☐ Flexible

**IP Assignment**

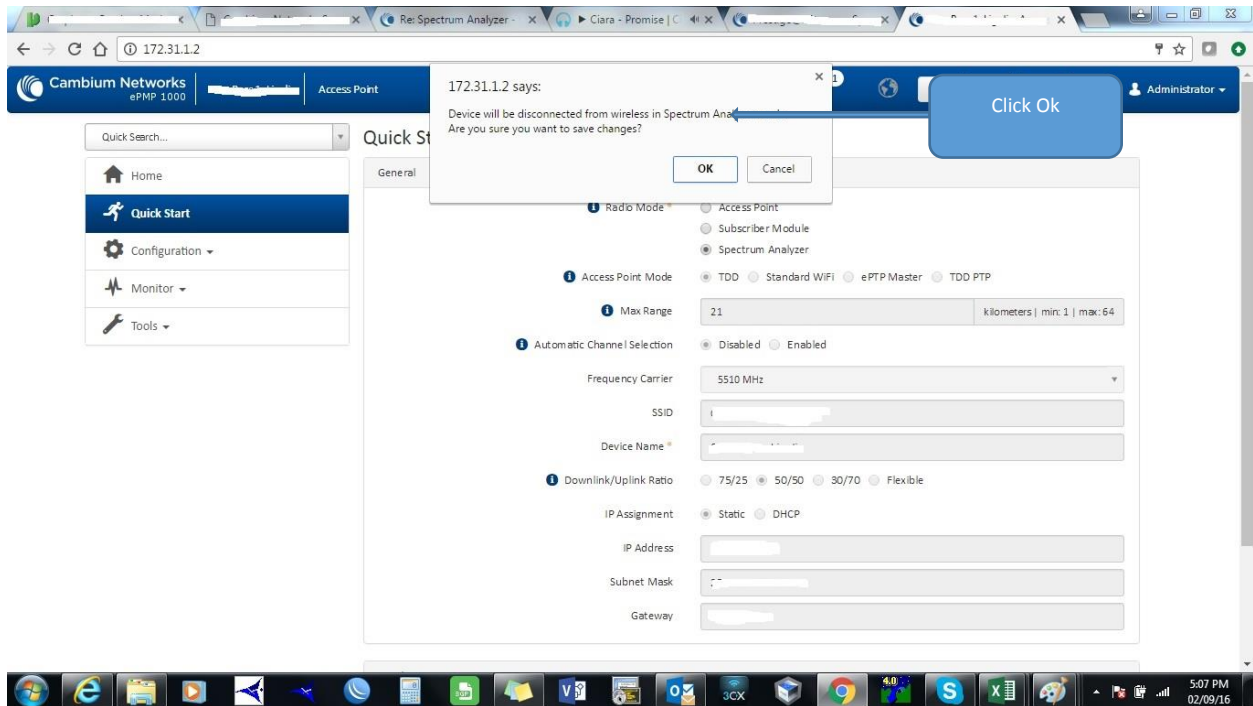
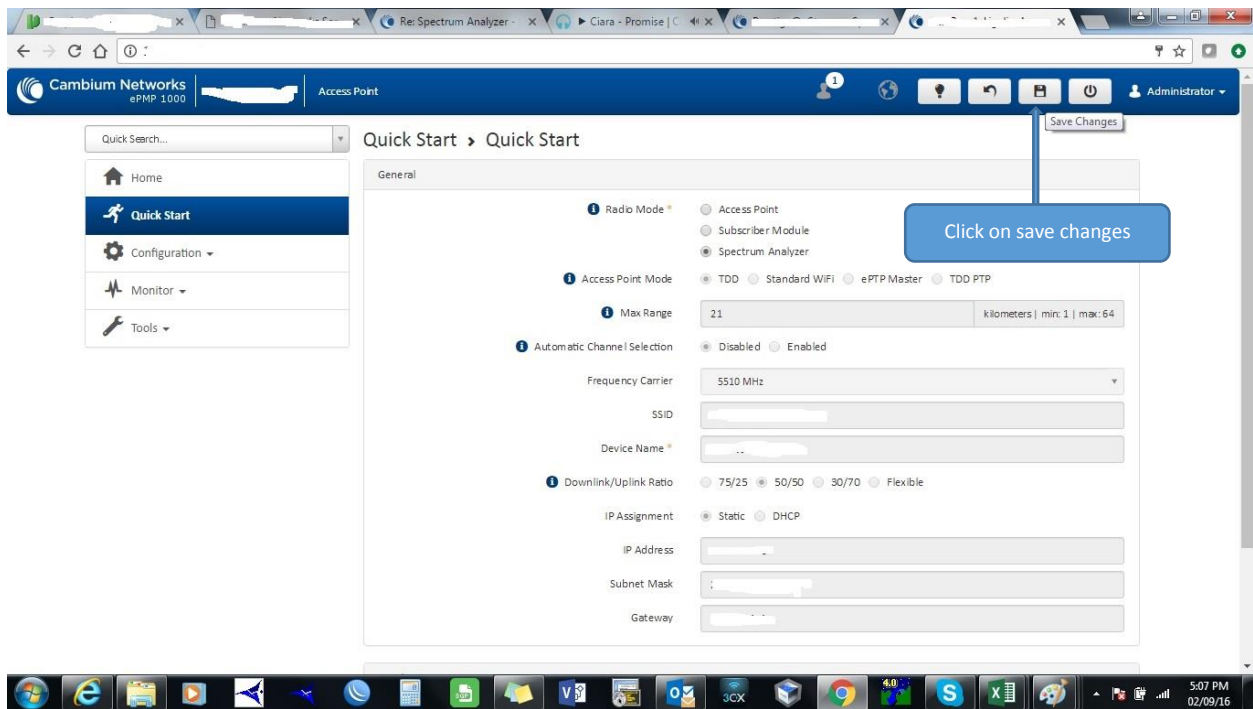
- ☒ Static
- ☐ DHCP

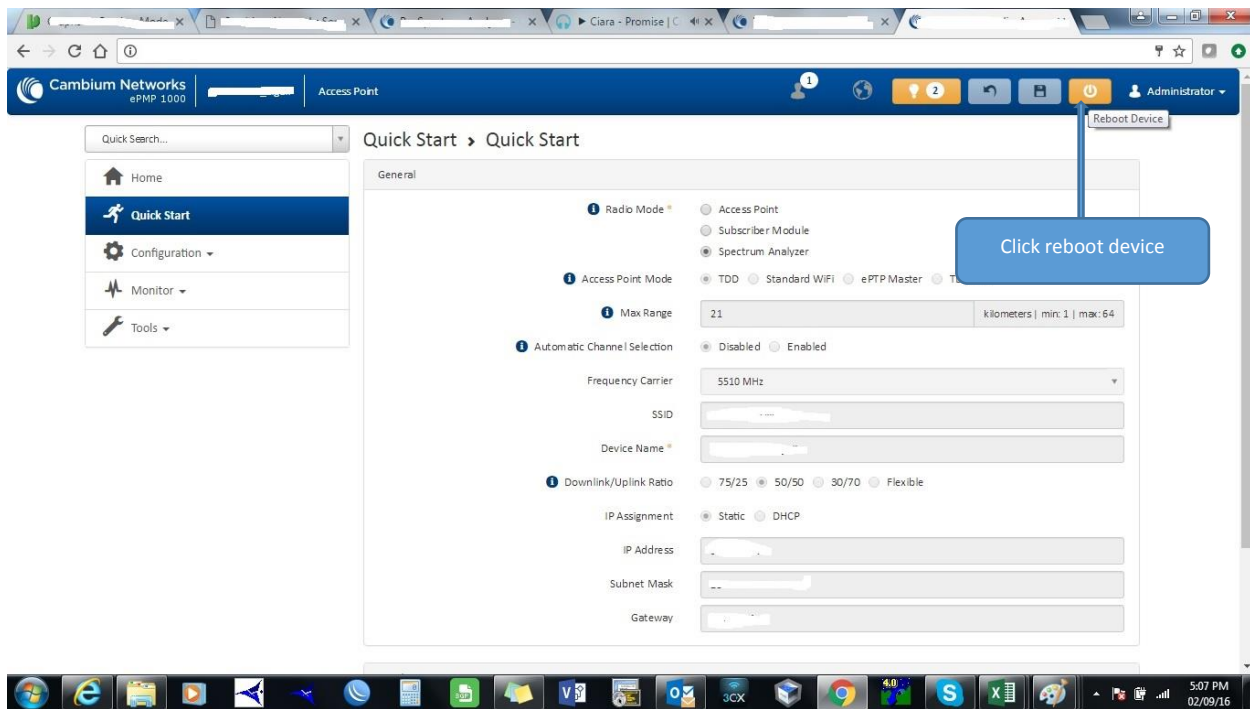
**IP Address**

**Subnet Mask**

**Gateway**

Click on spectrum analyzer





Cambium Networks ePMP 1000 [Device Name] Access Point

Quick Search...

- Home
- Quick Start**
- Configuration
- Monitor
- Tools

172.31.1.2 says:  
Rebooting the radio will result in a brief loss in connectivity.  
Are you sure?  
☐ Prevent this page from creating additional dialogs.  
OK Cancel

Click ok to reboot

General

Spectrum Analyzer

Access Point Mode: ☒ TOD ☐ Standard WiFi ☐ ePTP Master ☐ TOD PTP

Max Range: 21 kilometers | min: 1 | max: 64

Automatic Channel Selection: ☒ Disabled ☐ Enabled

Frequency Carrier: 5510 MHz

SSID: [Text Field]

Device Name: [Text Field]

Downlink/Uplink Ratio: ☒ 75/25 ☐ 50/50 ☐ 90/70 ☐ Flexible

IP Assignment: ☒ Static ☐ DHCP

IP Address: [Text Field]

Subnet Mask: [Text Field]

Gateway: [Text Field]

Cambium Networks ePMP 1000 [Device Name] Spectrum Analyzer

Quick Search...

- Home
- Quick Start
- Configuration**
- Monitor
- Tools

Click on configuration

### System Summary

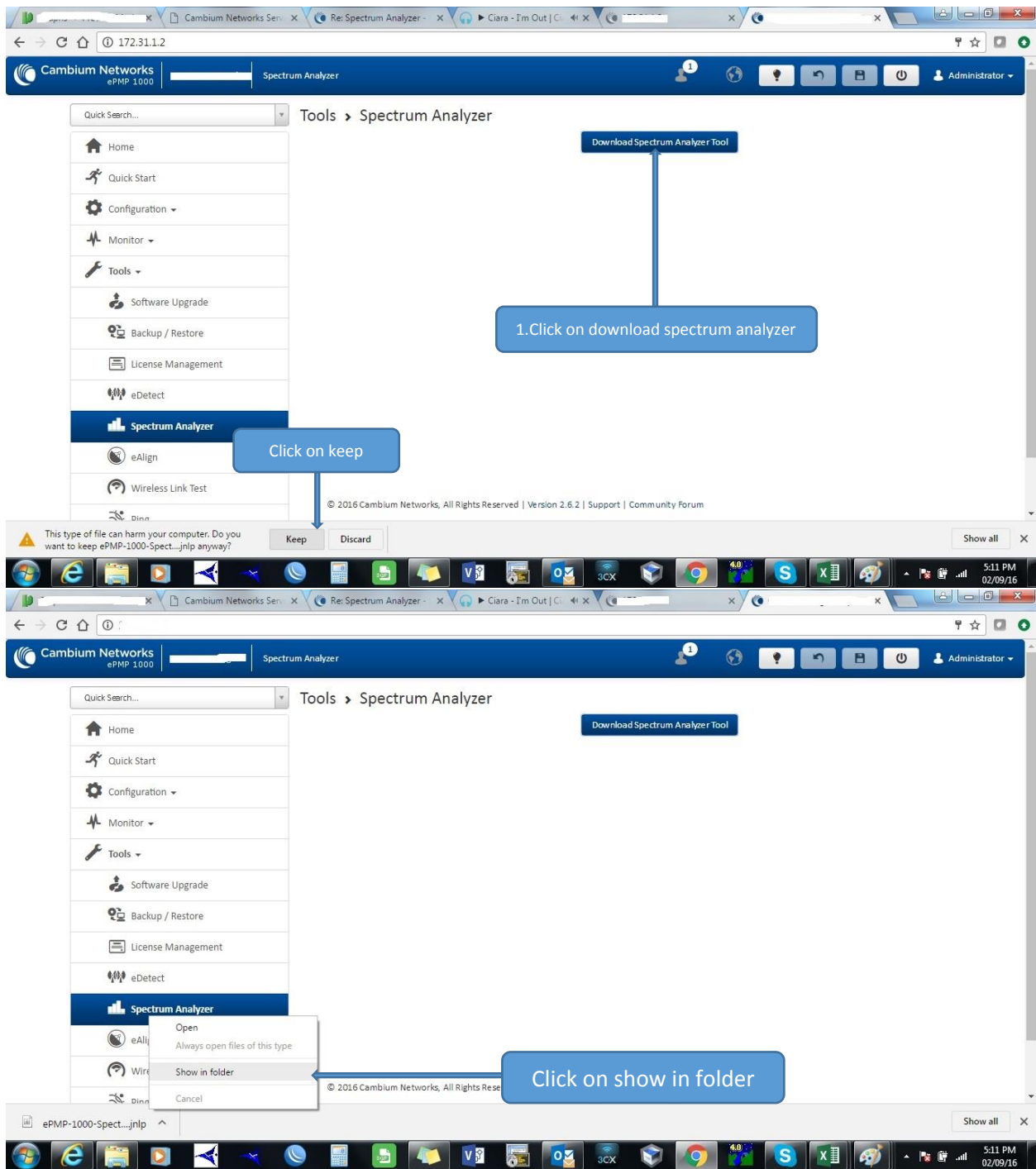
|                             |               |
|-----------------------------|---------------|
| Device Name                 | ---           |
| SSID                        | ---           |
| Operating Frequency         | Scanning...   |
| Operating Channel Bandwidth | 20 MHz        |
| Transmitter Output Power    | 0 dBm         |
| Antenna Gain                | 15 dBi        |
| Country                     | SP            |
| cnMaestro Connection Status | Resolving URL |
| cnMaestro Account ID        | ---           |

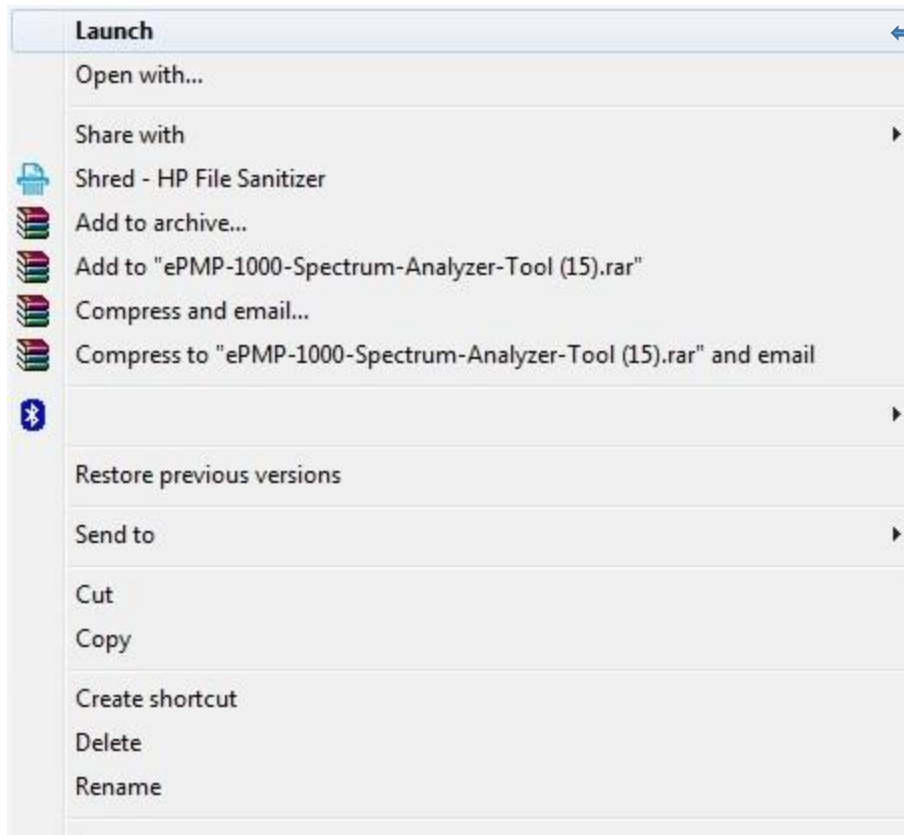
|                               |                           |
|-------------------------------|---------------------------|
| Wireless MAC Address          | ---                       |
| Ethernet MAC Address          | ---                       |
| IP Address                    | 172.31.1.2                |
| Date and Time                 | 01 Sep 2015, 00:01:45 GMT |
| System Uptime                 | 1 minute, 39 seconds      |
| System Description            | ---                       |
| Device Coordinates            | ---                       |
| DFS Status                    | Not Available             |
| Ethernet Status               | 100 Mbps / Full           |
| Wireless Status               | Up                        |
| Registered Subscriber Modules | 0                         |

172.31.1.2/#tools

© 2016 Cambium Networks, All Rights Reserved | Version 2.6.2 | Support | Community Forum








Click on launch



Java Update Needed

 Your Java version is out of date.

→ Update (recommended)  
Get the latest security update from java.com.

→ Block  
Block Java content from running in this browser session.

→ Later  
Continue and you will be reminded to update again later.

☐ Do not ask again until the next update is available.

Click on later

Cambium Networks  
ePMP 1000

Spectrum Analyzer

Download Spectrum Analyzer Tool

Quick Search...

Tools > Spectrum Analyzer

Home

Quick Start

Configuration

Monitor

Tools

Software Upgrade

Backup / Restore

License Management

eDetect


Spectrum Analyzer

eAlign


Wireless Link Test

Diagnose

Do you want to run this application?

**Name:** Spectrum Analyzer  
**Publisher:** Cambium Networks Ltd  
**Locations:** http://172.31.1.2  
Launched from downloaded JNLP file

This application will run with unrestricted access which may put your computer and personal information at risk. Run this application only if you trust the locations and publisher above.

 More Information

Run

Cancel

Click on run

© 2016 Cambium Networks, All Rights Reserved | Version 2.6.2 | Support | Community Forum

ePMP-1000-Spect...jnlp

Show all

5:13 PM  
02/09/16



