

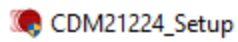
## We suggest the following steps to Install

### 1. Download File

You will get a download file in zip Format.

### 2. STEP 2

Extract the downloaded link and driver is ready to install.



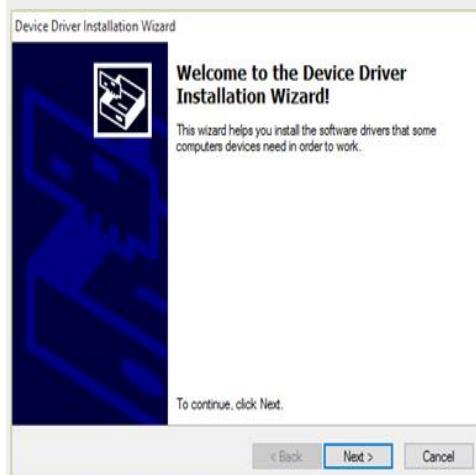
### 3. STEP 3

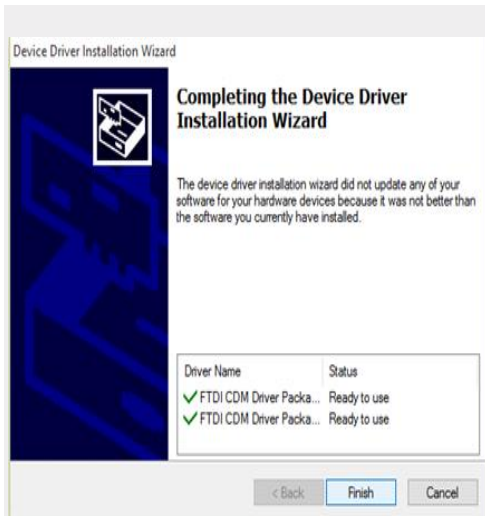
Double click on CDM setup, you will get an access request Click 'Yes' and proceed.



### 4. STEP 4

Now, Extract the Windows driver package.





**Click on I accept, next and Finish.**

**Now, the device is ready to use.**

## **5. How to Connect: -**

Just connect the UGR86 device with the system through USB cable. LED Indications:  
-

1. Power (Green):-  
If LED is blinking: Device is powered on.
2. GPS LED (Amber):-  
If LED flashes: Device has acquired valid GPS signal.

**If LED is OFF: -** GPS signal is either not available or the system is in process of acquiring the GPS signal.

## **6. NOTE: -**

1. For acquiring GPS signal the device should be placed under open sky or any window.
2. It might takes 10-15 mins. for Amber LED to blink/flashes.

## **Do's and Don'ts:-**

Plug USB cable gently to UGR86  
Keep the UGR86 Device away from water.